

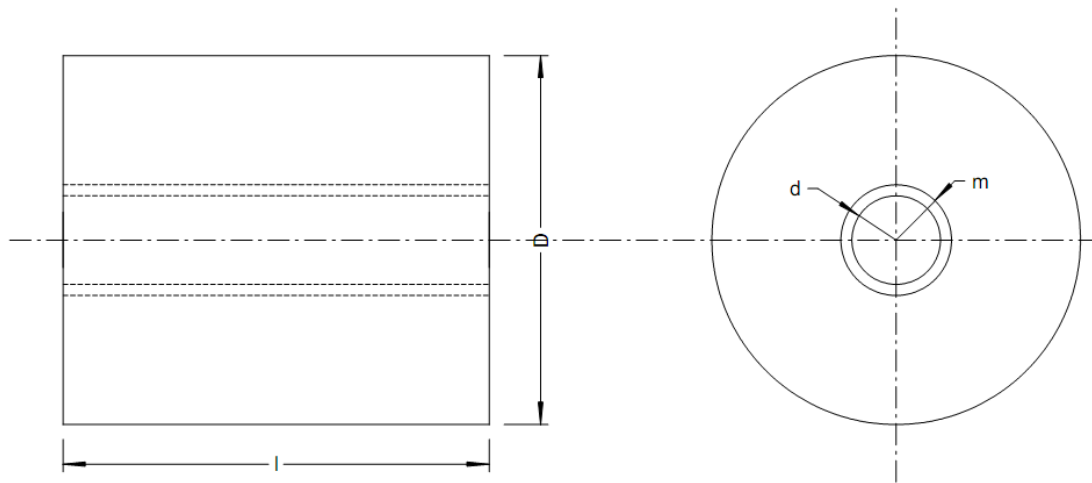
MPA-TH-57-31-TL

PAPIER THERMIQUE

Rouleau de papier thermique de haute qualité convenant aux imprimantes de la série MTH2500.



- Largeur 57 mm, diamètre 31 mm
- Sans mandrin

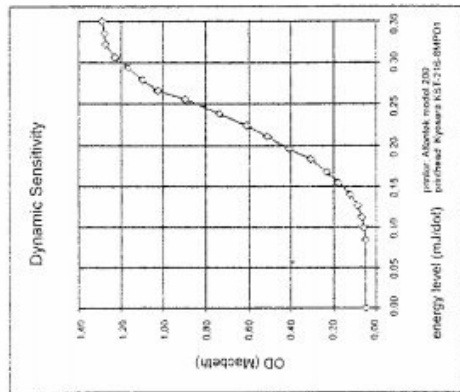


Paramètre	Symbole	Valeur	Tolérance
Laize	l	57.2 mm	0/+0.2
Diamètre rouleau	D	31 mm	0/+0.2
Diam. mandrin I	d		Sans mandrin
Diam. mandrin E	m	10 mm	Cote indicative
Longueur		11 m	0/+0.5
Poids papier		55 g/m ²	+/-4
Epaisseur papier		63μ	+/-5
Fin papier		Bande rouge lg 0.5m	
Stabilité		5 ans	
Type		Thermique Jujo AF50KS-E révélation noire	
Référence GPAO		MPA-TH-57-31-TL	

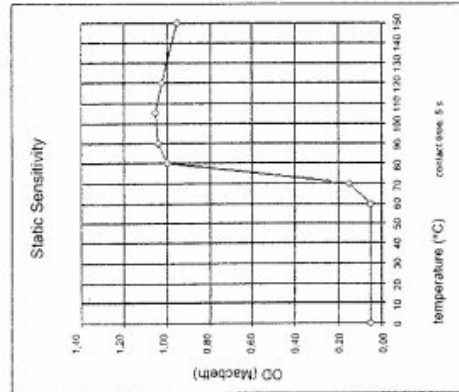
Technical Data Sheet

AF50KS-E

Standard grade for facsimile, cash register, receipt, coupon and P.O.S. use.



Examples of Color Development Graphs



PAPER PROPERTIES

ITEM	UNIT	VALUE	TEST METHOD
Basis Weight	g/m ²	55.0±4.0	SCAN-P6 / ISO 536
Thickness	µm	63±5	SCAN-P7 / ISO 534
Moisture	%	6.0±1.0	SCAN-P4 / ISO 287
Smoothness, Bekk	s	min. 450	TAPPI T 479 / ISO 5627
ISO-Brightness	%	min. 85	ISO 2470
Tensile strength (MD)	kN/m	min. 2.5	SCAN-P38 / ISO 1924-2
Tensile strength (CD)	kN/m	min. 1.5	SCAN-P38 / ISO 1924-2
Tear strength (MD)	mN	min. 260	SCAN-P11 / ISO 1974
Tear strength (CD)	mN	min. 260	SCAN-P11 / ISO 1974

IMAGE PROPERTIES

ITEM	UNIT	VALUE	TEST METHOD
Image color	-	black	
Dynamic sensitivity	OD	1.10±0.05	0.28 mJ/dot
Maximum density	OD	1.25±0.10	

STABILITY PROPERTIES

ITEM	UNIT	VALUE	CIRCUMSTANCES
Heat resistance:			60 °C, 24 h
Background	OD	max. 0.20	
Image loss	OD	max. 25%	
Humidity resistance:			40 °C, 90% RH, 24 h
Background	OD	max. 0.20	
Image loss	OD	max. 15%	
Light resistance:			5000 lux, 100 h
Background	OD	max. 0.20	
Image loss	OD	max. 10%	
Stability of image & printability		5 years	correct storage for thermal papers

This product is manufactured in Finland under the license of Nippon Paper Industries Co., Ltd.

Juho Thermal Ltd. P.O.Box 92 FIN-27501 Kauttua Finland Tel. +358 2 8393 2900
Fax +358 2 8393 2419 juho.thermal@ehlstrom.com